

# EU Energy Poverty Advisory Hub

Dora Biondani, Climate Alliance

# In a nutshell

The leading EU initiative run by the European Commission at the request of the European Parliament, is a **collaborative network** of stakeholders aiming to eradicate energy poverty and accelerate the just energy transition of European local governments.

**Mission** To become the central platform of energy poverty expertise in Europe.

Website [energy-poverty.ec.europa.eu](https://energy-poverty.ec.europa.eu) Helpdesk @ [info@energypoverty.eu](mailto:info@energypoverty.eu)

Twitter [EPAH\\_EU](#) Newsletter [subscription](#)

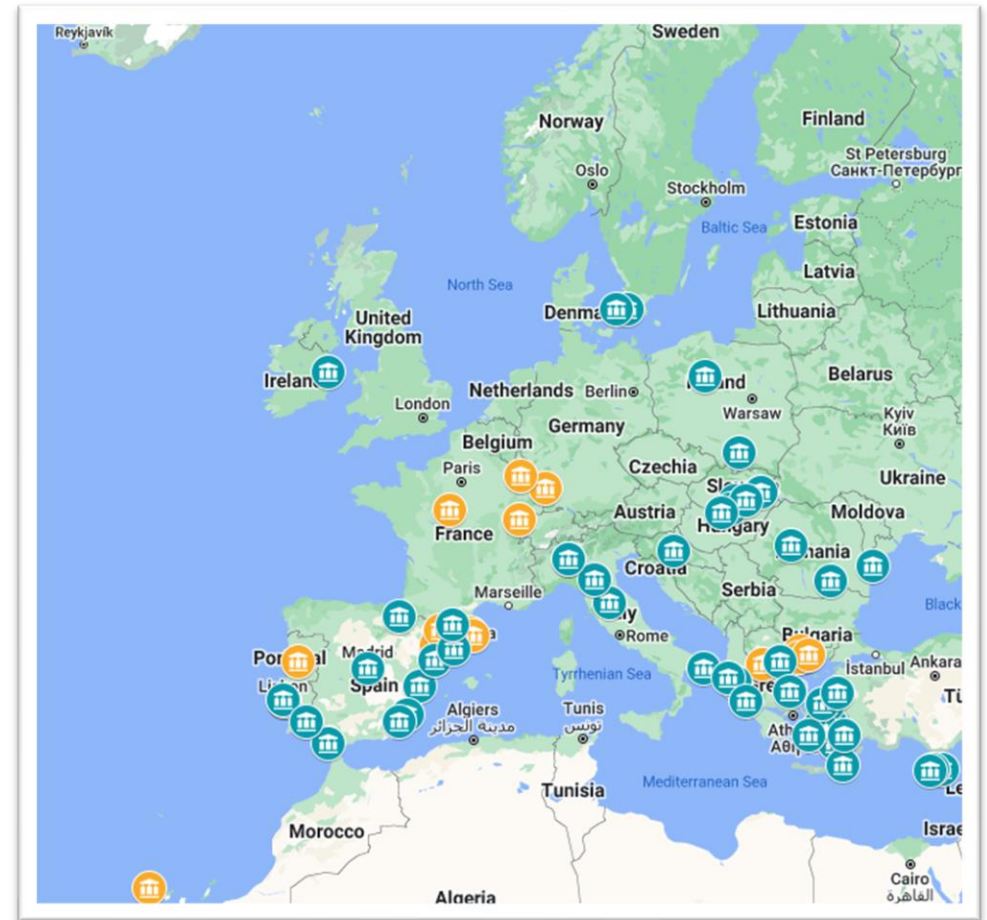


# Technical support

## Tailored support to 85 municipalities

- **13 EU countries:** CYPRUS | CROATIA | DENMARK | FRANCE | GREECE | HUNGARY | IRELAND | ITALY | PORTUGAL | POLAND | ROMANIA | SPAIN | SWEDEN
- **(Some of the) TOPICS ADDRESSED:** Energy poverty diagnosis | energy equity | renewable energy communities | one-stop-shops, rural areas | elders | information and awareness | deep renovations
- **(Some types of) ACTIVITIES DEVELOPED:** capacity building | skills development | surveys and questionnaires | data analyses | awareness campaigns | events and tools | stakeholder mapping | methodological development | roadmaps etc.

All municipalities on the [EPAH website](#).



# Skills development

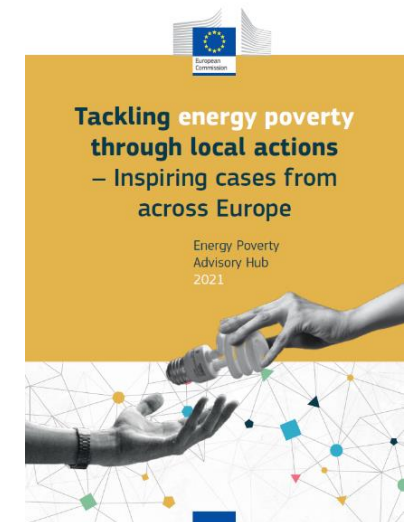
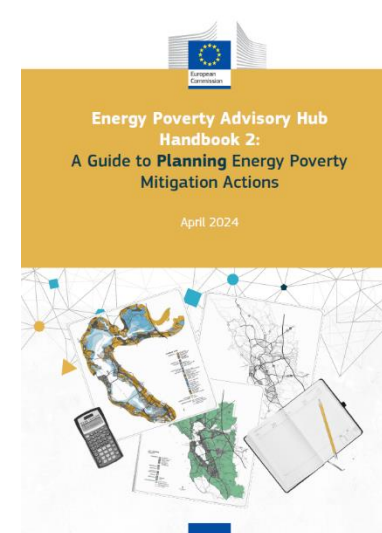
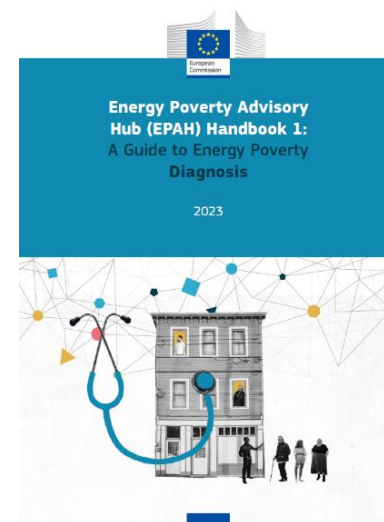
## Capacity building

### ONLINE COURSES & VIDEOS

- **3 free open online courses** developed suitable for all levels of knowledge
- Self-paced
- Include presentations from experts, interviews with practitioners and interactive activities
- Monthly **interviews** with practitioners sharing experiences and practices

[elearning.energypoverty.eu](https://elearning.energypoverty.eu)

### PUBLICATIONS



Browse by topics

Climate   Facilities/housing   Mobility   Socio-economic aspects

Clear selection

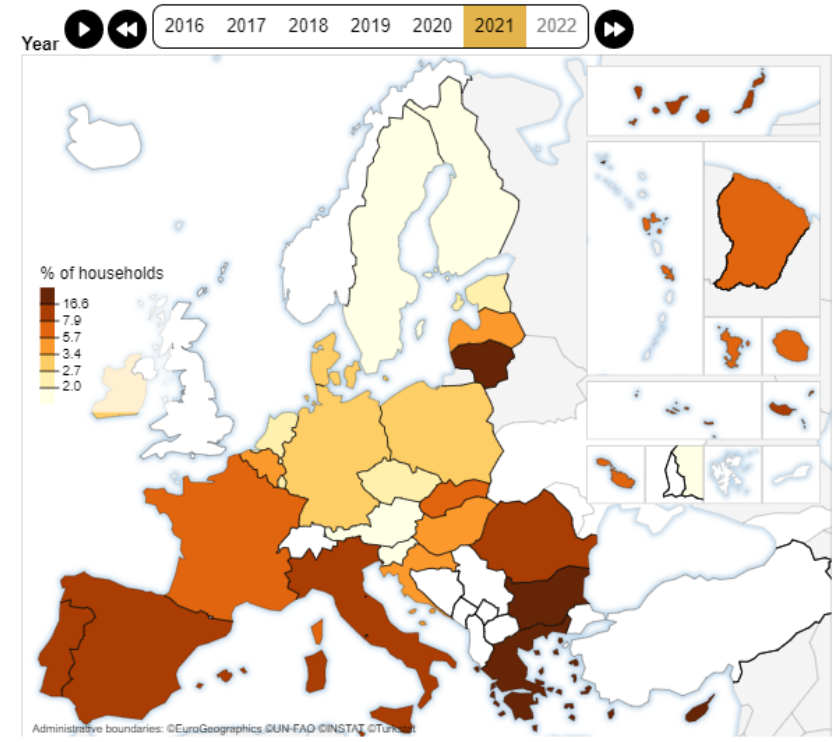
View data   Browse data by indicator   Data source   Disaggregate data by

by indicator   by country   Inability to keep hom...   EUROSTAT Househ...   No disaggregation

### Inability to keep home adequately warm

No disaggregation - Country average

The inability to keep home adequately warm indicator represents the share of (sub-) population /households not able to keep their home adequately warm, based on the question "Can your household afford to keep its home adequately warm?".



Unit % of households OR % of population

Source EU-SILC and JRC

Last update 2021

Download  
Dataset: CSV / EXCEL  
Map: PNG  
Map, graph and info: PDF

Compare countries

Select an item

**Bear in mind**  
This indicator refers to an individual's perception of 'adequately' which may differ from one country to another or between age-groups, etc. The indicator only refers to the warmth and does not cover summer energy poverty. The indicator does not provide information on the causes for the inability; hence it should be analyzed together with other indicators, such as energy expenditures, for identifying potential causes. [Learn more](#)

# Research results: the national indicators database

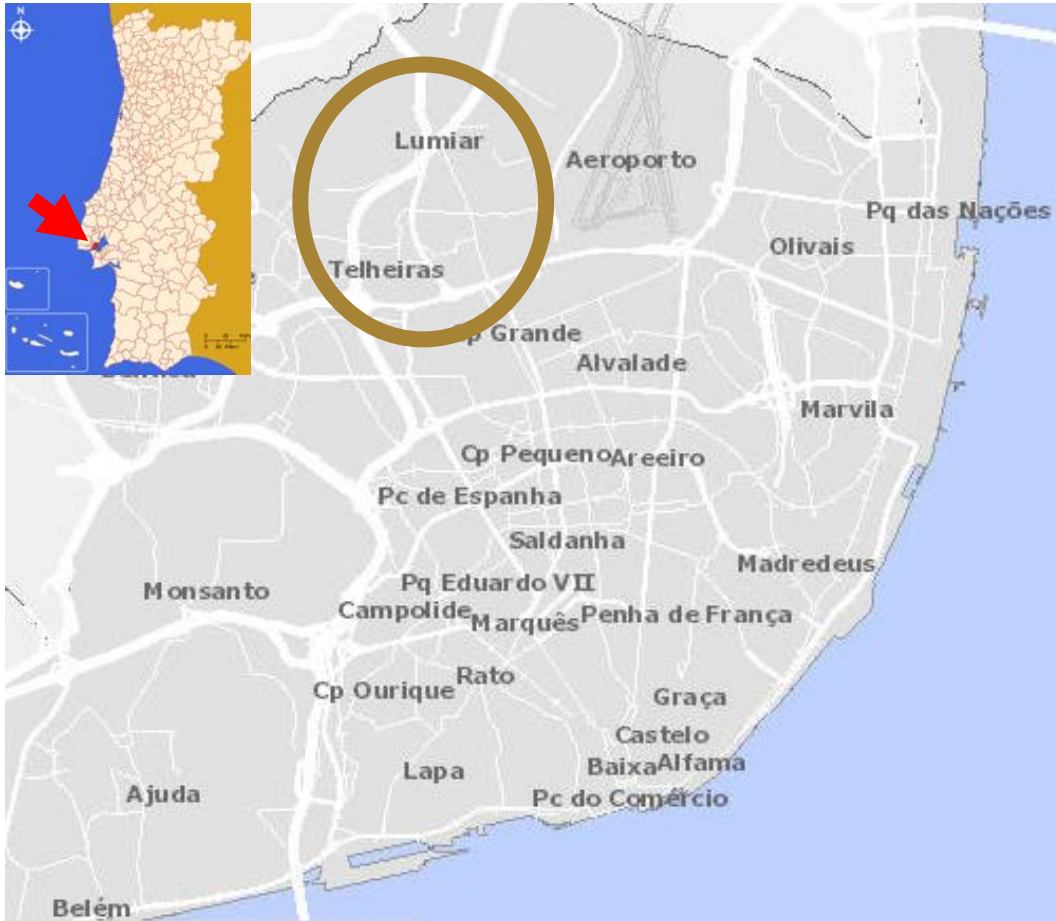
- Classified into **four primary topics** aligned with the guidelines of the Covenant of Mayors on energy poverty indicators at the local level (CoM, 2022)
- **29 indicators**
- **Data source:** EU-wide datasets (EUROSTAT, EU-SILC, JRC)
- **Analysis of the indicator** including their definition, constraints, practical applications with examples, and insightful analysis of their significance.

# Community - Network engagement

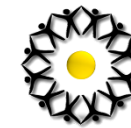
- International conferences – onsite (latest in Warsaw 2023: 330 participants from 23 countries)
- National events in 11 countries
- Lunch talks and webinars (monthly)



# Telheiras Renewable Energy Community (Lumiar, Portugal)

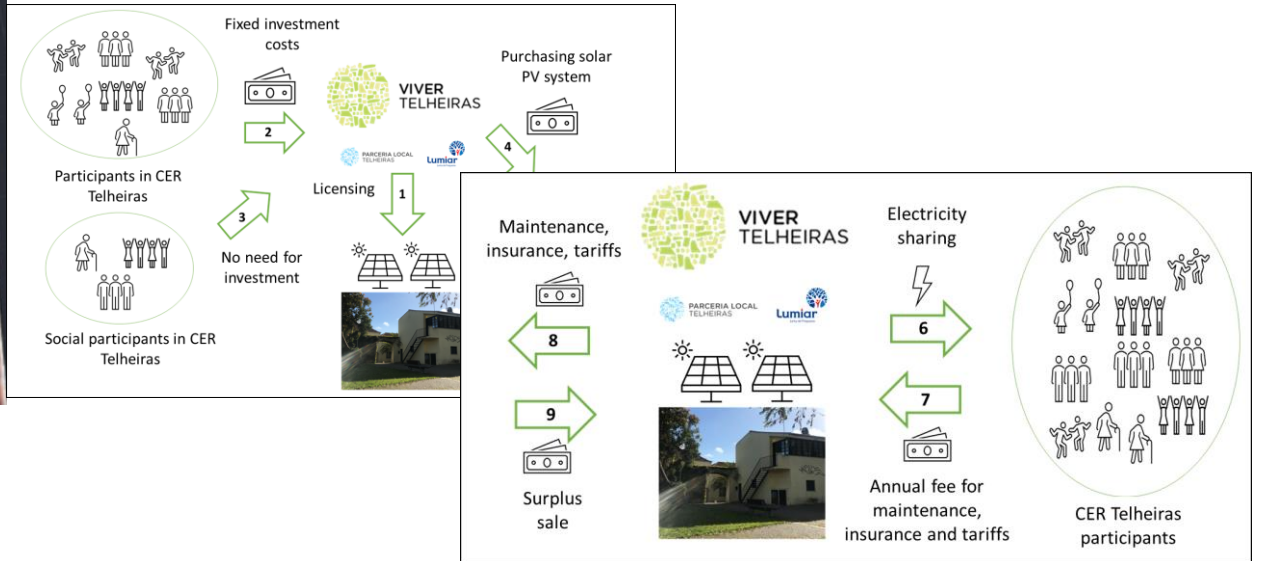
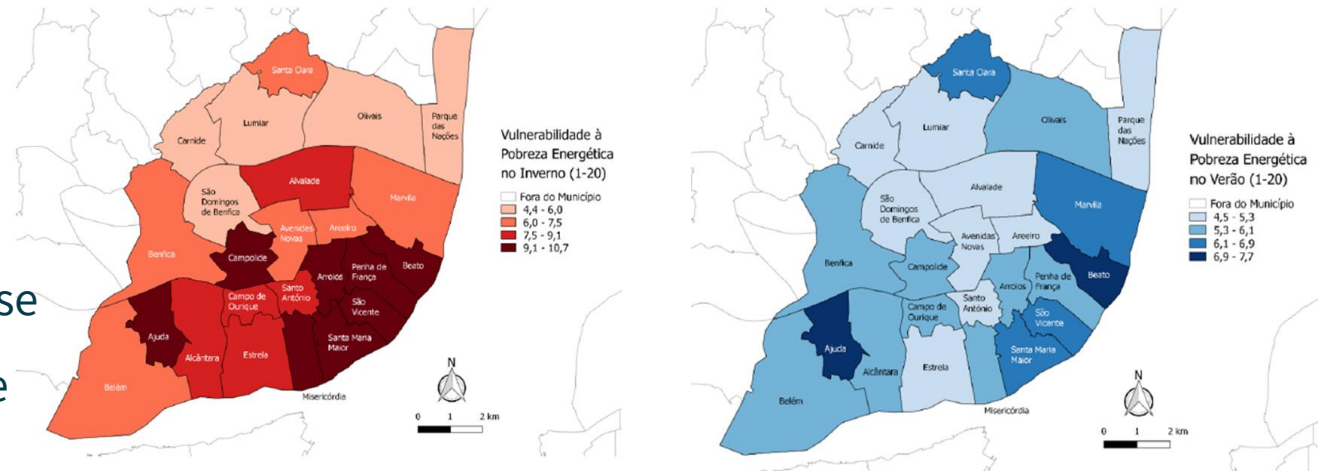


*Goal: setting-up one of the first **citizen-led and inclusive** renewable energy communities in Portugal, tackling energy poverty and promoting energy democracy.*



# Tasks supported during EPAH's technical assistance

- Energy Poverty Diagnosis
- Solar Photovoltaic Sizing
- Financial and Operational Model installation phase
- Financial and Operational Model operation phase





# Legal Entity and Internal Regulation

- *Legal entity: non-profit association*
- *Regulations **defining electricity sharing coefficients**, conditions to join and leave, among other rules, and establishing that members have equal voting rights in general assemblies.*



# Communication and Member Recruitment

- **Local stakeholder network.**
- *Regular presence in local events, public sessions and articles in media.*
- *Informative guide and other dissemination materials (e.g. flyers).*
- *Successful recruitment of participants.*



# Energy-poor Families Integration

- To be identified by the **Lumiar Parish**
- To be engaged by the **social assistants**, whom they already trust.
- **Active decision to join and equal voting rights, promoting social inclusion.**

## IDENTIFY

- Sociodemographic factors
- Household composition
- Health
- Energy literacy
- Cultural



# Energy-poor Families Integration

## STAKEHOLDERS

Department	Primary Interest (What is the core topic of work of the department)	Available Information / questions they can respond to	Expected Outcome (What they would like to get from this diagnosis)	Availability (How much they can support the lead department)
Social	[e.g. overall welfare for vulnerable population]	[Levels of income, Unemployment, Age Who?]	[e.g. specifically understand which segment of the vulnerable population is also specifically affected by energy poverty]	to be discussed
Health	Healthcare services and planning	[related disease incidence, excess mortality rates]	Healthcare services and planning	
Environmental, Energy	[e.g. Effective energy planning]	[Energy Efficiency level GHG production Energy Distribution How?]	[e.g. understand how the energy services are related to energy poverty]	
Housing/ Urbanism		[Energy performance of buildings; Envelope and equipment characteristics; Energy efficiency levels. Mapping. Where?]		
Education		[level of education]		
Financial Department		[Cost of services Cost of material How much?]		
Other [...]				



## Learnings from the process

- *Weak social movements, dependent on volunteers and with low energy literacy*
- *Insufficient information and lack of knowledge*
- *Financing difficulties, especially for energy-poor families*
- *Bureaucratic and slow licensing process lacking transparency and accountability.*



**ENGAGE** with a network of local partners and build on existing dynamics.

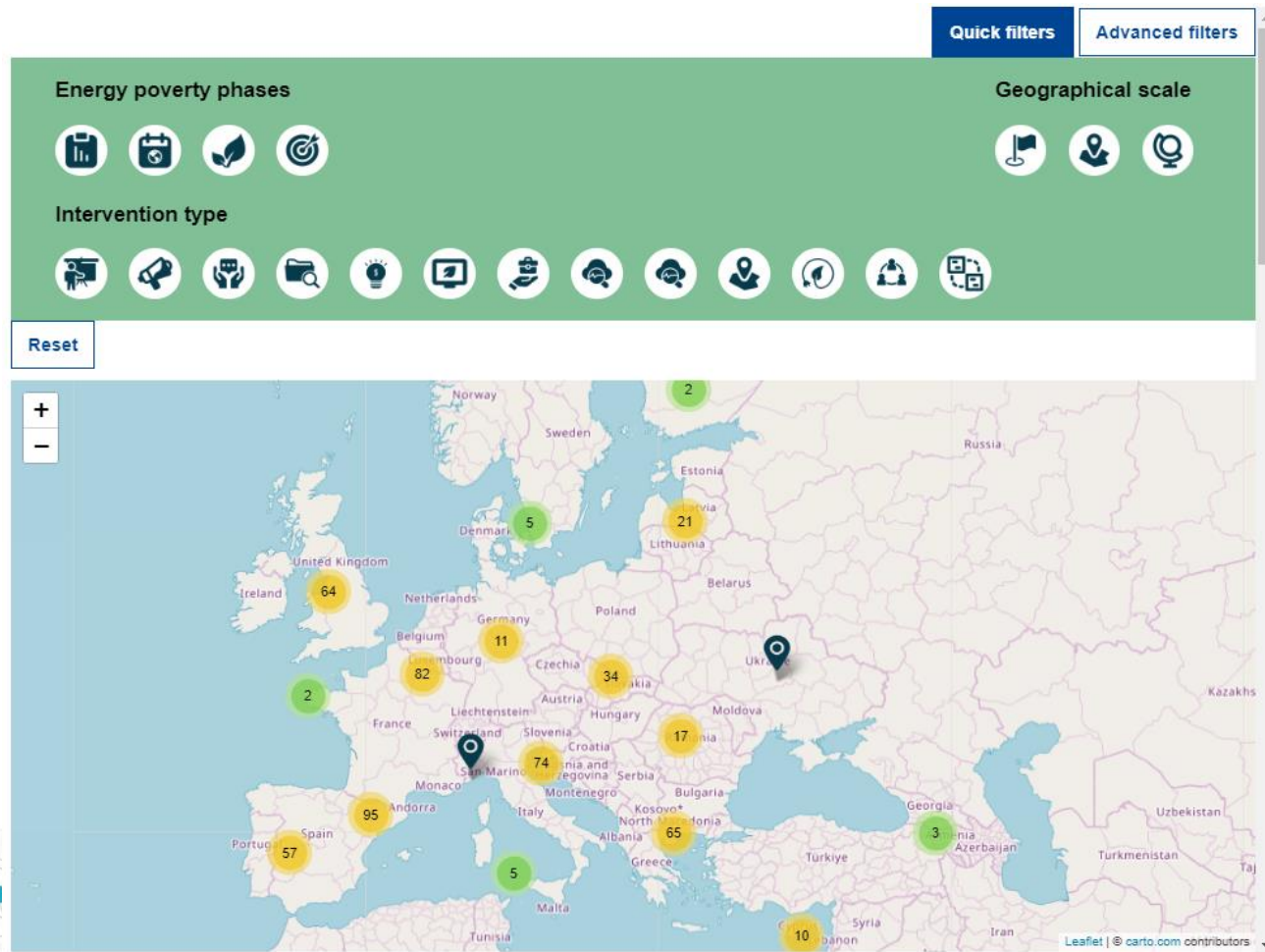
provision of **TARGETED SUPPORT** to citizens' groups, associations, and local governments.

**DEDICATED FINANCING** for non-profit energy communities and/or that include energy-poor households.

**“Without targeted support and finance citizen-led energy communities will not spontaneously generate!”**

# Community - Sharing practices

## EPAH ATLAS



- More than **250** projects and measures/policies featured from accross the world
- **8 filtering options** including per country, energy poverty phase, type of intervention, geographical scale etc.

# Connect with us

Website [energy-poverty.ec.europa.eu](https://energy-poverty.ec.europa.eu)

Helpdesk @ [info@energypoverity.eu](mailto:info@energypoverity.eu)

X (former Twitter) [EPAH EU](https://twitter.com/EPAH_EU)

Newsletter [subscription](#)